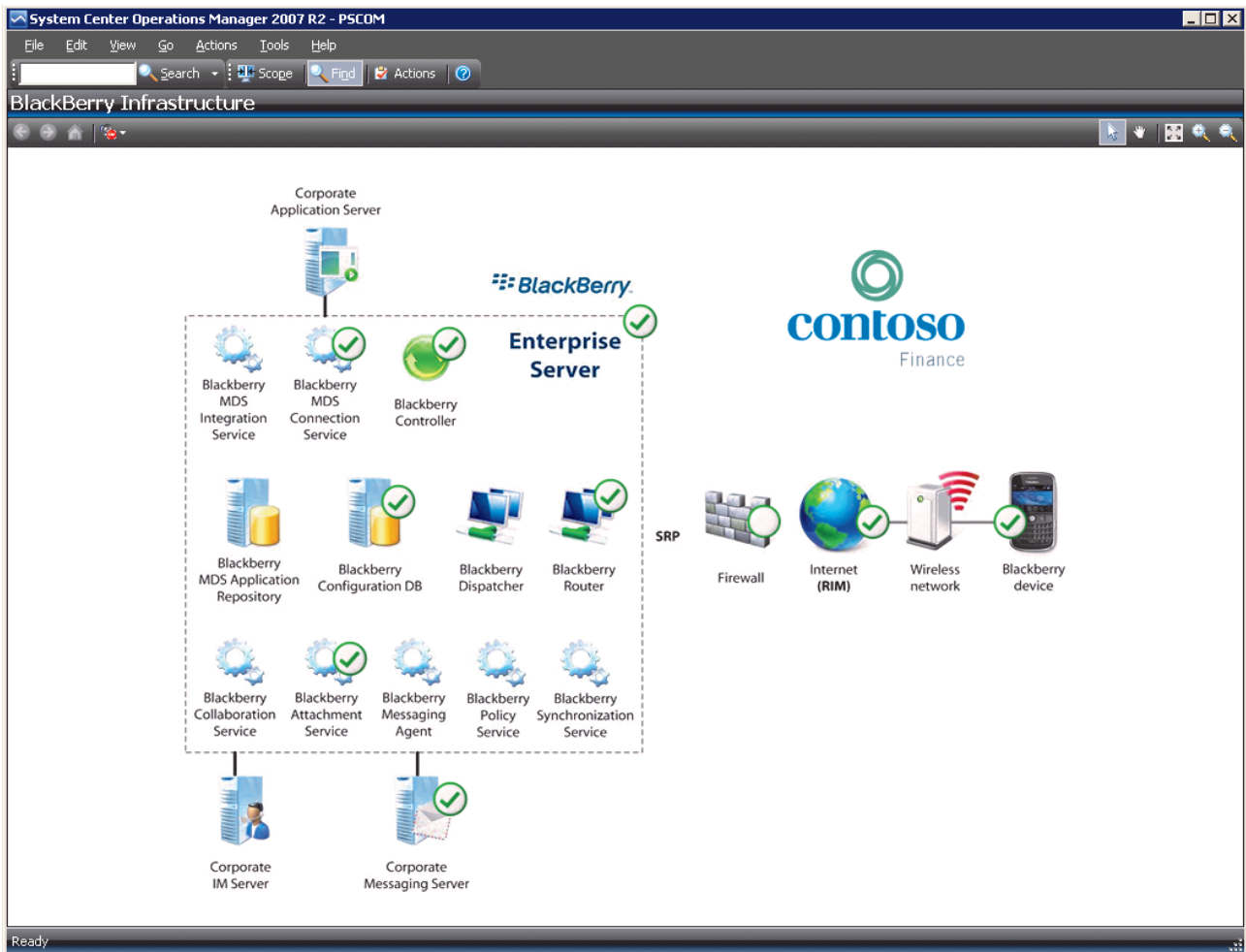


# “Pro-actively detect problems”

Mobile messaging is critical for today’s way of doing business. From the CEO to the Systems Administrator — everybody relies on this technology. Don’t let infrastructure problems catch you off-guard! OpsLogix’ intelligent management pack for BlackBerry puts you in control.

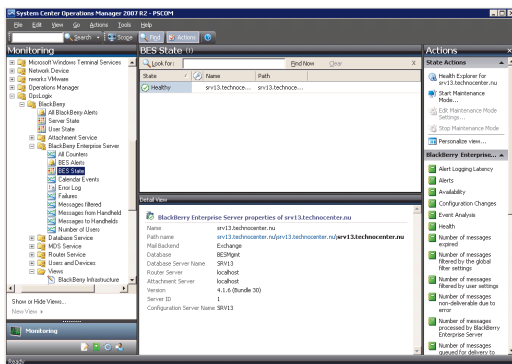


\* Live visualization requires the OpsLogix IMP for BlackBerry, Professional edition

## BlackBerry Monitoring

## BlackBerry Monitoring

Almost 70% of today's workforce already relies on mobile messaging, more than half of those companies use BlackBerry devices. Of these companies, less than 10% monitor their Blackberry infrastructure actively. OpsLogix' intelligent management pack for BlackBerry helps you detect problems pro-actively, both BlackBerry Enterprise Server 4.1 and 5.0 are supported.



### Blackberry Enterprise Server v5.0

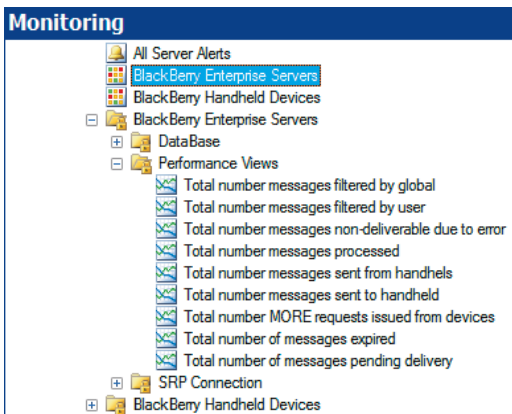
In this release we've added **Blackberry Version 5 support**, an extensive class model, a Distributed Application, configurable monitors through overrides and knowledge for every monitor. Also included are reports for taking advantage of the new OpsMgr 2007 R2 reporting features. The installation guides will help you understand the various features and facilitate a smooth integration into your monitoring environment.

### Root cause analysis

OpsLogix' intelligent management pack for BlackBerry checks the status of your BlackBerry service as a whole by checking every critical component. Using System Center Operations Manager's built-in Live Views, issues are instantly visualized enabling BES administrators to react quickly and determine the root cause of a problem.

### Performance & State monitoring

OpsLogix' intelligent management pack for BlackBerry provides comprehensive state views and performance views for your BES infrastructure. Not only does it alert & report on BlackBerry Enterprise Server issues, it also monitors the most critical component; the SRP connection to RIM.



### System Requirements

- System Center Operations Manager 2007 SP1 or higher
- BlackBerry Enterprise Server version 4.1 or higher, or
- BlackBerry Enterprise Server version 5.0
- Opslogix IMP for BlackBerry, Standard or Professional edition



More information at [www.opslogix.com/blackberry](http://www.opslogix.com/blackberry)